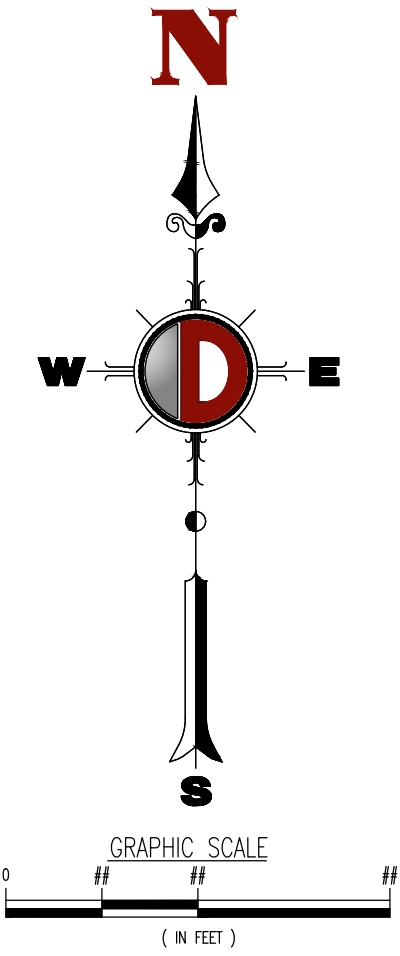
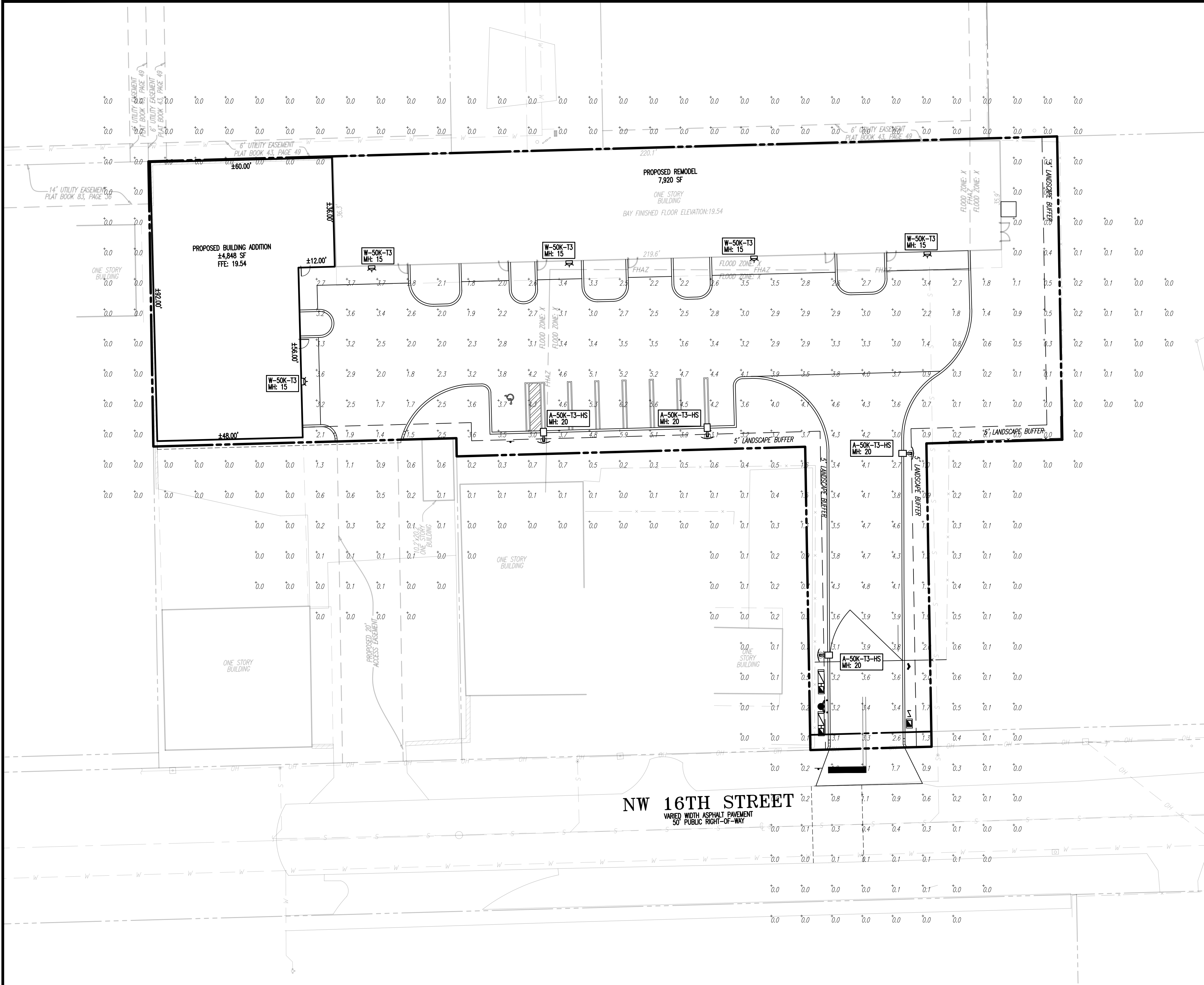


Plotted: 09/09/25 - 12:35 PM, By: confroom, Product Ver: 25.0
File: F:\DESPC PROJECTS\5758 LT 20 LLC\25-01613 Pompano Beach FL\Dwg\Entitlements\057582501613SP2.dwg, ----> C5.00, PHOTOMETRIC PLAN



LIGHTING NOTES

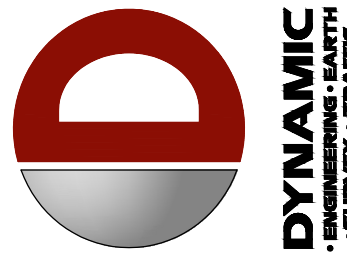
1. THIS LIGHTING PLAN ILLUSTRATES ILLUMINATION LEVELS CALCULATED FROM LABORATORY DATA TAKEN UNDER CONTROLLED CONDITIONS IN ACCORDANCE WITH ILLUMINATING ENGINEERING SOCIETY OF NORTH AMERICA (IESNA) APPROVED METHODS. ACTUAL SITE ILLUMINATION LEVELS AND PERFORMANCE OF LUMINAIRES MAY VARY DUE TO VARIATIONS IN WEATHER, ELECTRICAL VOLTAGE, TOLERANCE IN LAMPS, AND OTHER RELATED VARIABLE FIELD CONDITIONS.
2. ALL EXISTING CONDITIONS LIGHTING LEVELS ARE REPRESENTATIVE OF AN APPROXIMATION UTILIZING LABORATORY DATA FOR SIMILAR FIXTURES AND/OR ACTUAL FIELD MEASUREMENTS TAKEN WITH A LIGHT METER. DUE TO FACTORS SUCH AS FIXTURE MAINTENANCE, EQUIPMENT TOLERANCES, WEATHER CONDITIONS, ETC., ACTUAL LIGHTING LEVELS MAY DIFFER AND THE LIGHTING LEVELS DEPICTED ON THIS PLAN SHOULD BE CONSIDERED AS APPROXIMATE.
3. CONDUITS SHALL BE INSTALLED A MINIMUM OF 2 FEET BEHIND GUDDERAIL POSTS.
4. ALL WIRING METHODS AND EQUIPMENT CONSTRUCTION SHALL CONFORM TO THE CURRENT NATIONAL ELECTRICAL CODE.
5. LIGHTING CALCULATIONS HAVE BEEN PREPARED WITH PROBE START METAL HALIDE LUMINAIRES AS NEW PHOTOMETRIC FILES FOR PULSE START METAL HALIDE AND OTHER ENERGY INDEPENDENCE AND SECURITY ACT OF 2007 COMPLIANT LUMINAIRES ARE NOT READILY AVAILABLE FROM MANUFACTURERS AT THIS TIME.
6. REFER TO PHOTOMETRIC PLAN FOR LIGHT POLE CONDUIT ROUTING.

LIGHTING LUMINAIRE SCHEDULE							
SYMBOL	QUANTITY	LABEL	MOUNTING HEIGHT	ARRANGEMENT	LIGHT LOSS FACTOR	MANUFACTURER	DESCRIPTION
	4	A-50K-T3-HS	20 FT	SINGLE	1.000	COOPER LIGHTING	MCGRAW EDISON GALLEON LED TYPE 3 AREA LIGHT W/ HOUSE SIDE SHIELD
	5	W-50K-T3	15 FT	SINGLE	1.000	COOPER LIGHTING	MCGRAW EDISON GALLEON SIZE 1 LED WALL PACK
STATISTICAL AREA SUMMARY							
LABEL	AVERAGE	MAXIMUM	MINIMUM	AVG./MIN.	MAX./MIN.	DESCRIPTION	
PAVED AREAS	3.89	6.2	0.8	4.23	7.75	CALCULATIONS TAKEN WITHIN PAVED AREAS	
PEDESTRIAN WALKWAY	3.02	3.7	1.8	1.68	2.06	CALCULATIONS TAKEN WITHIN PEDESTRIAN WALKWAYS	

AAC

PZ25-12000014

08/20/2025



NO.	DATE	REVISION	BY
1	07/19/23	PRC COMMENTS	
2	08/22/25	AGENCY COMMENTS	

THIS PLAN SET IS FOR PERMITTING PURPOSES ONLY AND MAY NOT BE USED FOR CONSTRUCTION

DESIGNED BY: SRM
CHECKED BY: EC
AP
CREATED BY: AP

PROJECT: LT 20, LLC
PROPOSED WAREHOUSE ADDITION
PARCELS 194, 484, 220, 20-0371
115 NW 16TH STREET
POMPANO BEACH, BROWARD COUNTY, FL 33060

DYNAMIC ENGINEERING
LAND DEVELOPMENT CONSULTING • PERMITTING
GEOTECHNICAL • ENVIRONMENTAL
TRAFFIC • SURVEY • PLANNING & ZONING

100 NE 5th Avenue
Suite 82
Delray Beach, FL 33483
T: 561.921.8570

Offices conveniently located throughout the United States:
New Jersey | Delaware | Florida | Maryland | Pennsylvania | Texas
Florida Certificate of Authorization No. 32533

www.dynamiccec.com

ÁNGEL PIÑERO

PROFESSIONAL ENGINEER
FLORIDA LICENSE No. 88047
DATE:



PROTECT YOURSELF

ALL STATES REQUIRE NOTIFICATION OF EXCAVATORS, DESIGNERS, OR ANY PERSON PREPARING TO DISTURB THE EARTH'S SURFACE ADVISE IN ANY STATE

FOR STATE SPECIFIC DIRECT PHONE NUMBERS VISIT: WWW.CALL811.COM

TITLE:
PHOTOMETRIC PLAN

SCALE: (H) NOT TO SCALE
(V) SCALE
DATE: 04/15/2025

PROJECT No:
5758-25-01613

SHEET No:

C5.00

Rev. #:

2